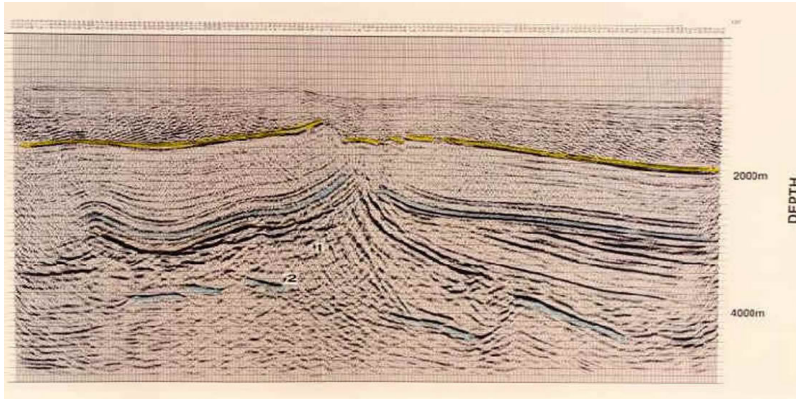


Case 5: Sub-Salt Exploration (ref. Lee and Zhang, Geophysics, 1992)



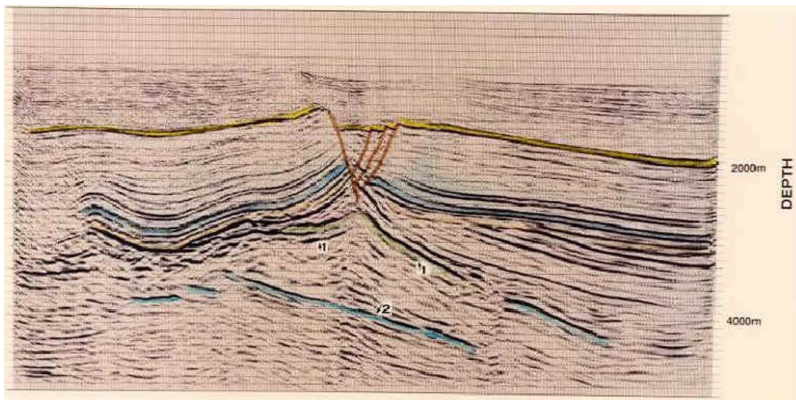
Software: [iPRIM](#) residual migration was the key success factor.

Results: Quickly improved seismic depth imaging of area under the salt.

Problem: Prior to using [iPRIM](#), the image under the salt was poor.

Solution: [iPRIM](#), [pre-stack residual migration](#) was applied to pre-stack depth migrated data. It provided the best seismic imaging under Zeckstein salt and salt internal reflections from Platten dolomite due to dip-influenced residual moveout equation (see Shot File Migration).

iPRIM provides 3D dip-influenced velocity errors scanning and quality control for residual moveout correction and maximum seismic image focusing .



Request Proposal