

Case 6: Low Angle Anticline - Pre-stack Depth Migration

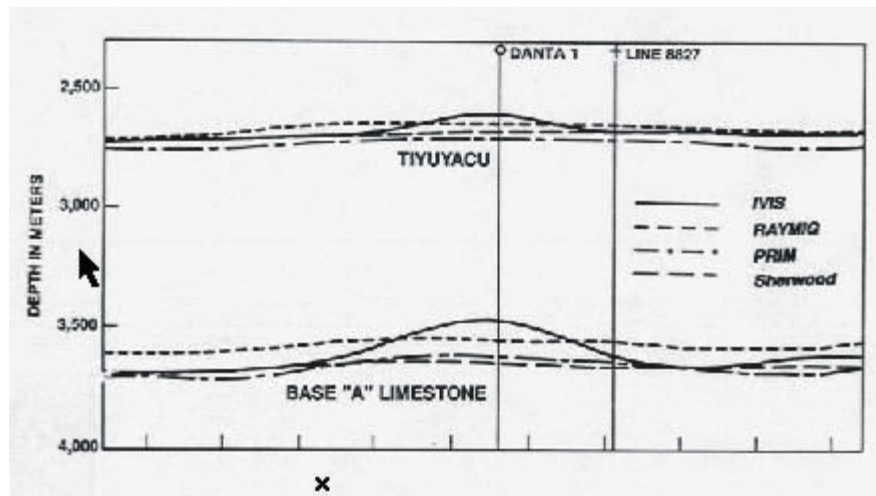
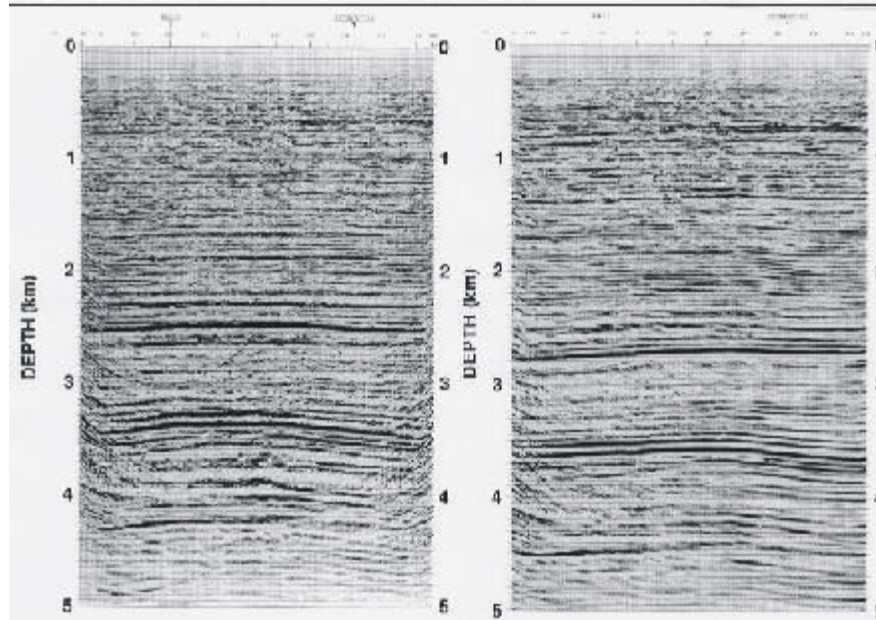


Figure 5.1. EC 8626 The Depth Estimation of the Top of Tiyuyacu and Base "A" Limestone



Software: [iPRIM](#) residual migration was the key success factor.

Results: Quickly improved depth imaging of a low angle anticline in Ecuador.

Problem: Low angle anticlines are very difficult to image correctly, which can hide large reserves or prevent maximizing the reserve potential by drilling in the wrong places.

Solution: [iPRIM](#), [pre-stack residual migration](#) was applied to pre-stack depth migrated data. It provided the best seismic imaging.

[iPRIM](#) provides 3D dip-influenced velocity errors scanning and quality control for residual moveout correction and maximum seismic image focusing .

Request Proposal